

INSTALLATION GUIDE

Laundry Jet Insert Jet Pack

July 2017

Version 1.0 Revision 0.2

Rev 3 Units

*Laundry Jet
2001 Challenger Avenue
Oroville, CA 95965*





Document Revisions

Date	Version Number	Document Changes
4/12/2017	1.0 Rev 0.1	Insert Jet Pack Installation Guide - Rev 3 Units
7/21/2017	1.0 Rev 0.2	Insert Jet Pack Installation Guide - Rev 3 Units



Table of Contents

1	Introduction.....	5-6
2	Contents.....	7
3	Pipe Installation Overview.....	8-12
	3 - Components & Tools	8
	3.1 - Pipe Installation	9
	3.2 - Port Drop Installation	10
	3.3 - Port 90 Installation.....	11
4	P5M Wall Port Installation.....	12-15
	4 - Components & Tools	12
	4.1 - Port Template.....	13
	4.2 - P3 Sensor Wand Installation	14
	4.3 - P5M Wall Port Installation.....	15
5	Insert Jet Pack Installation.....	16-29
	5 - Components & Tools	16
	5.1 - Insert Jet Pack Installation	17-29
6	Warranty	30
7	Engineering Prints.....	31-35



1 Introduction

Laundry Jet is truly the first modern, on demand whole home vacuum laundry delivery system. Laundry Jet is not restricted by gravity and works with both single story and multi-story homes, or commercial buildings using our efficient patented vacuum system to transport dirty laundry at the touch of a button. This makes it possible to have multiple locations in your home to send laundry instantly to the laundry room.

200 years ago the first laundry chutes were a simple hole in the floor where dirty laundry was dropped into the hole. By definition, the laundry chute uses gravity and is restricted to two story and homes and above. The hole and later chutes were restricted in location, as they needed to be directly above, or nearly above, the final collection or cleaning location to make them effective. They also must not interfere with the structural integrity of the building.

No matter if you have a single story 1 bedroom home or multi story 20 room home or larger, Laundry Jet will work for you. Laundry Jet allows you to send your laundry up, down, and sideways; wherever you want in your home or building.

Gone are the days of piles of soiled clothing in bedrooms and bathrooms waiting for someone to collect and carry them for washing. No more negotiating the stairs with your face in armfuls of dirty laundry or heavy bulky laundry baskets.



The Laundry Jet installation is comprised of three elements:

- Laundry Jet Ports mounted in bedrooms, dressing rooms or bathrooms
- The laundry room Wall Mounted or Cabinet Insert Jet Pack unit
- 6" SDR 35 and fittings that connect the ports to the laundry room through the attic space

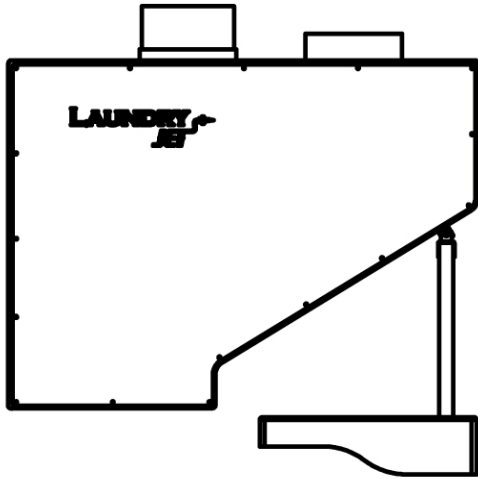
Laundry Jet Pipe

Laundry Jet specifies 6" rigid SDR 35 pipe and fittings. When the Laundry Jet is in use, it creates a strong vacuum that would deform regular ridged piping.

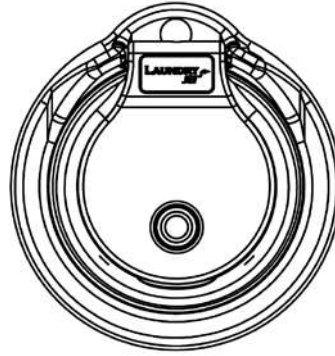
SDR 35 is designed to have a smooth transition in between fittings and connections, which ensures that clothing, bedding, and towels will travel smoothly to the laundry room.



2 Contents

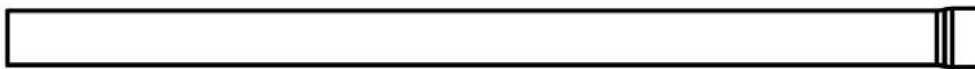
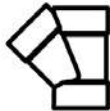


Laundry Jet Insert Jet Pack



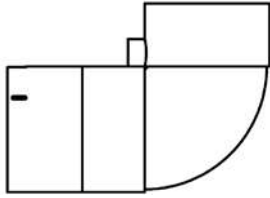
P5M Wall Port

Pipe Assembly

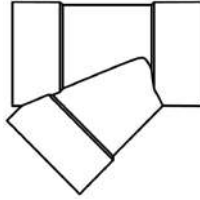


3 Pipe Installation

Components



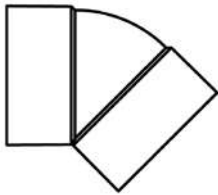
Port 90 Assembly



6 Inch Wye



6 Inch Cleanout Adapter



6 Inch 45 Degree Elbow

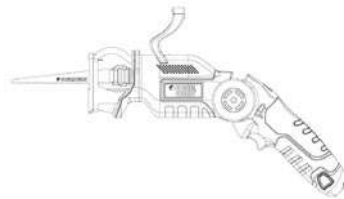


Cable Bundle

Tools



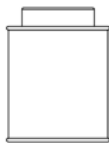
Cordless Drill



Sawzall



Tape Measure



PVC Glue



1" Wood Screw



Plumber's Metal Strapping Tape

3.1 Pipe Installation

Instructions



Required Piping Installation Standards

- All joints must use a minimum entry angle of 45 degrees with a break distance of 18 inches (460 MM)
- Pipe must be completely seated in fitting connections.
- Seal all joints using standard PVC glue. Connections must be glued around 360 degrees to ensure maximum system performance.
- System must be strapped with “plumbers tape” (or equivalent) every 6 feet. Port 90 must be strapped and secured prior to Port installation.
- Install Cleanout ports every 50 feet on angled runs. Straight trunk lines can run up to 100 feet with cleanouts at either end.

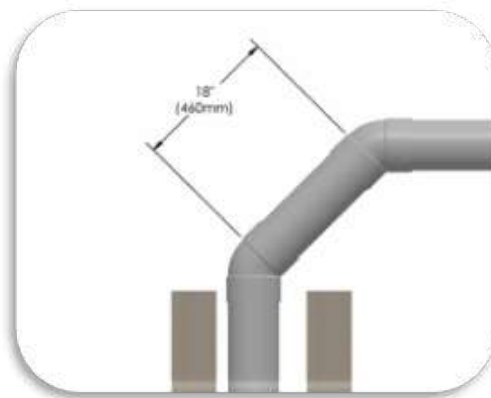


3.2 Pipe Installation

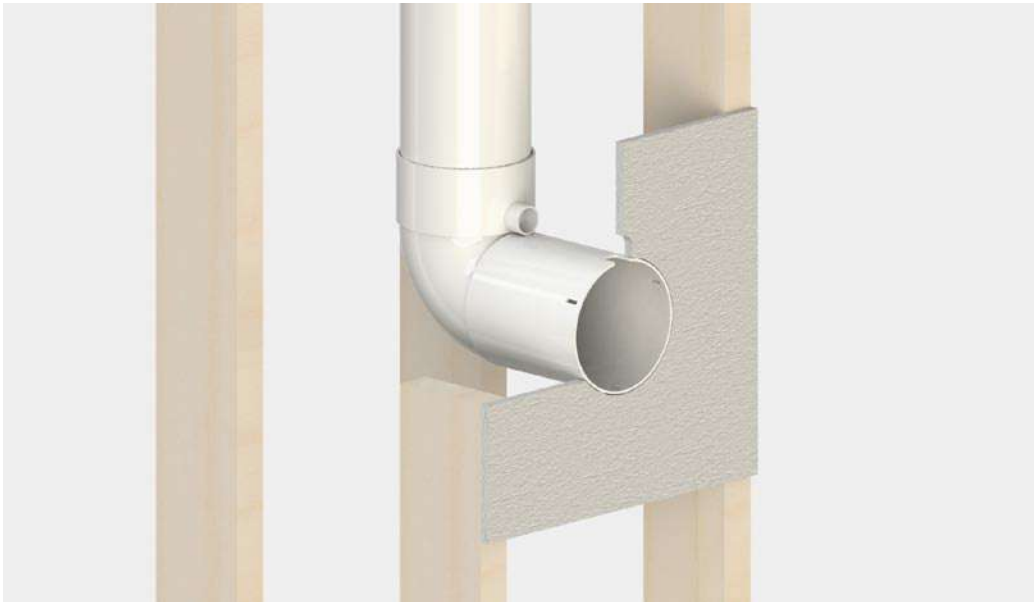


Port Drop Installation

- Install a standard 45-degree drop with 18-inch (460 MM) minimum break distance at attic to ceiling penetrations. See image below.
- Block and strap drop line at midway point.
- Strap Port 90 using a block, or the mounting bracket, on the underside of the 90 with minimal strapping material wrapping around Port 90 body.



3.3 Pipe Installation



Port 90 Installation

- Port 90 must be installed with front face of Port 90 flush with the finished face of interior wall.
- Port 90 must be installed on a plum horizontal port drop line.
- Strap Port 90 using a block on the underside of the 90 with minimal strapping material wrapping around Port 90 body.
- Clean Port 90 wand connection.
- Apply a small amount of lithium grease to inside of Port 90 wand port.

4 P5M Wall Port Installation

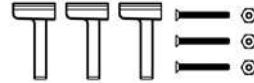
Components



P5M Wall Port
Port Seal



P3 Sensor Wand

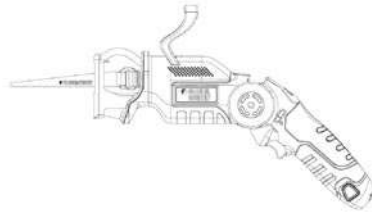


LJ Port Hardware Kit

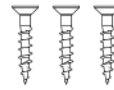
Tools



Stud Finder



Sawzall



Cutout Template Screws



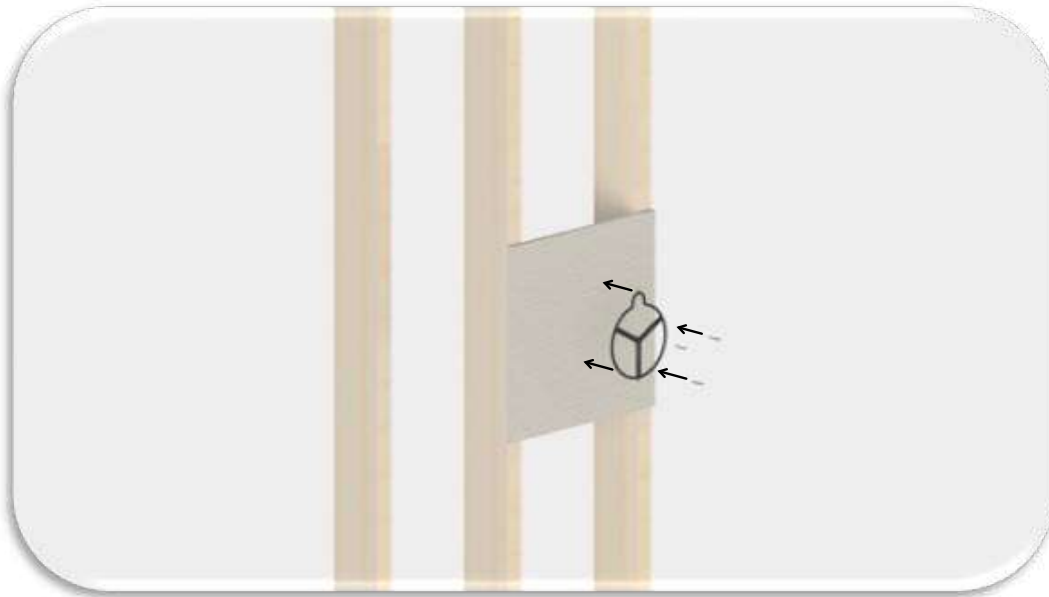
P5M Wall Port Cutout Template



Screw Driver



4.1 Step 1 - Port Template

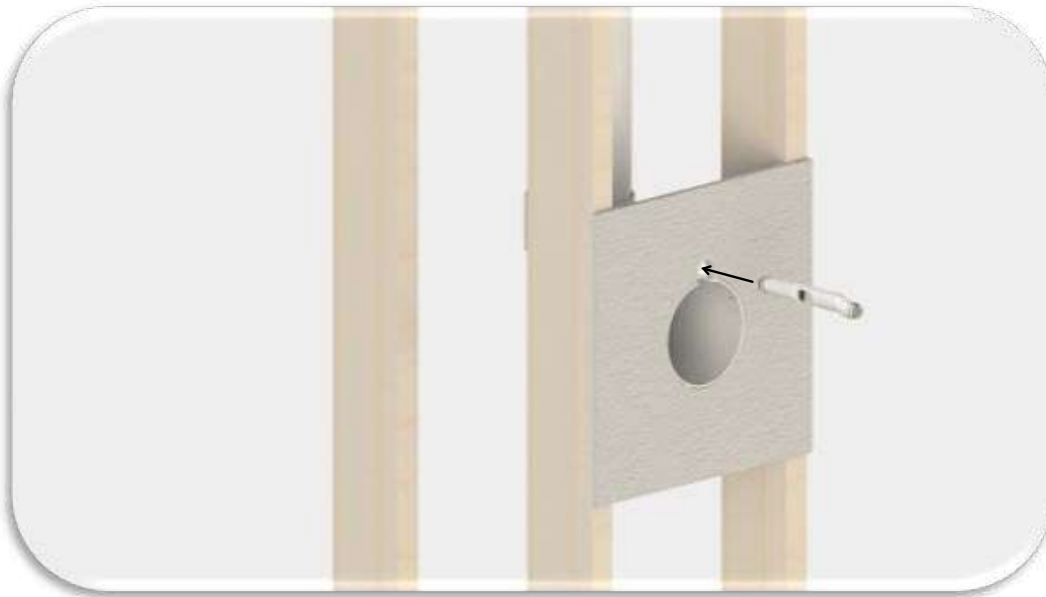


Port Template

- Mark a horizontal line using a level at intended port location.
- Attach port template using 3 screws provided.
- Using sawzall cut around inside profile of port template.
- Remove port template by unscrewing 3 attachment screws.
- Using sawzall trim 3 attachment profiles to release drop piece.

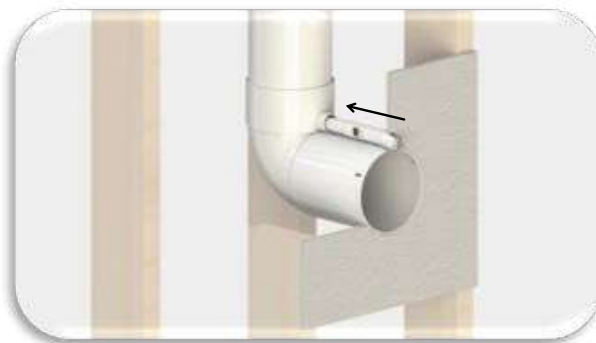


4.2 Step 2 - P3 Sensor Wand



Sensor Wand

- Install wand assembly by connecting port wand black plug connection.
- Insert wand through upper wand cutout.
- Seat straight wand end into Port 90 Wand Port.

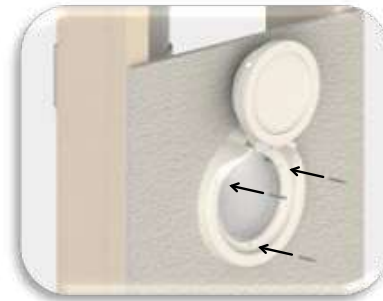
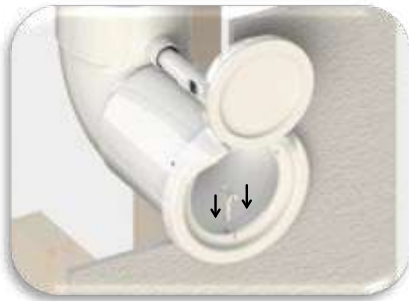


4.3 Step 3 - P5M Wall Port Assembly



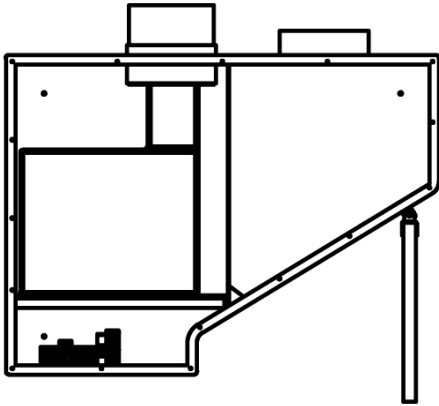
Wall Port Assembly

- Connect Port Assembly by centering port on pipe and sliding it into place.
- Make sure the wand slides into the wand port at the top of the port.
- Once wand is properly seated, insert the 3 retention clips.
- Tighten fastening hardware by locating nut at the back of the retention clip and inserting the 1-1/4" machine screw.
- Before completing attachment make sure the port sits straight and is properly located.

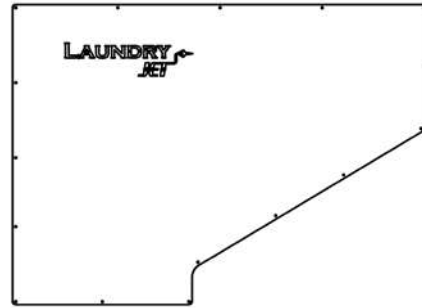


5 Insert Jet Pack Installation

Components



Insert Jet Pack Housing



Insert Jet Pack Front Panel

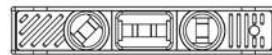
Tools



Cordless Drill



Stud Finder



Level



5.1 Insert Jet Pack Installation



Step 1

- Modify the Custom cabinet to accommodate the Insert Cabinet. Using the provided drawings in Section 7, use appropriate tooling to remove the necessary material from the cabinet.

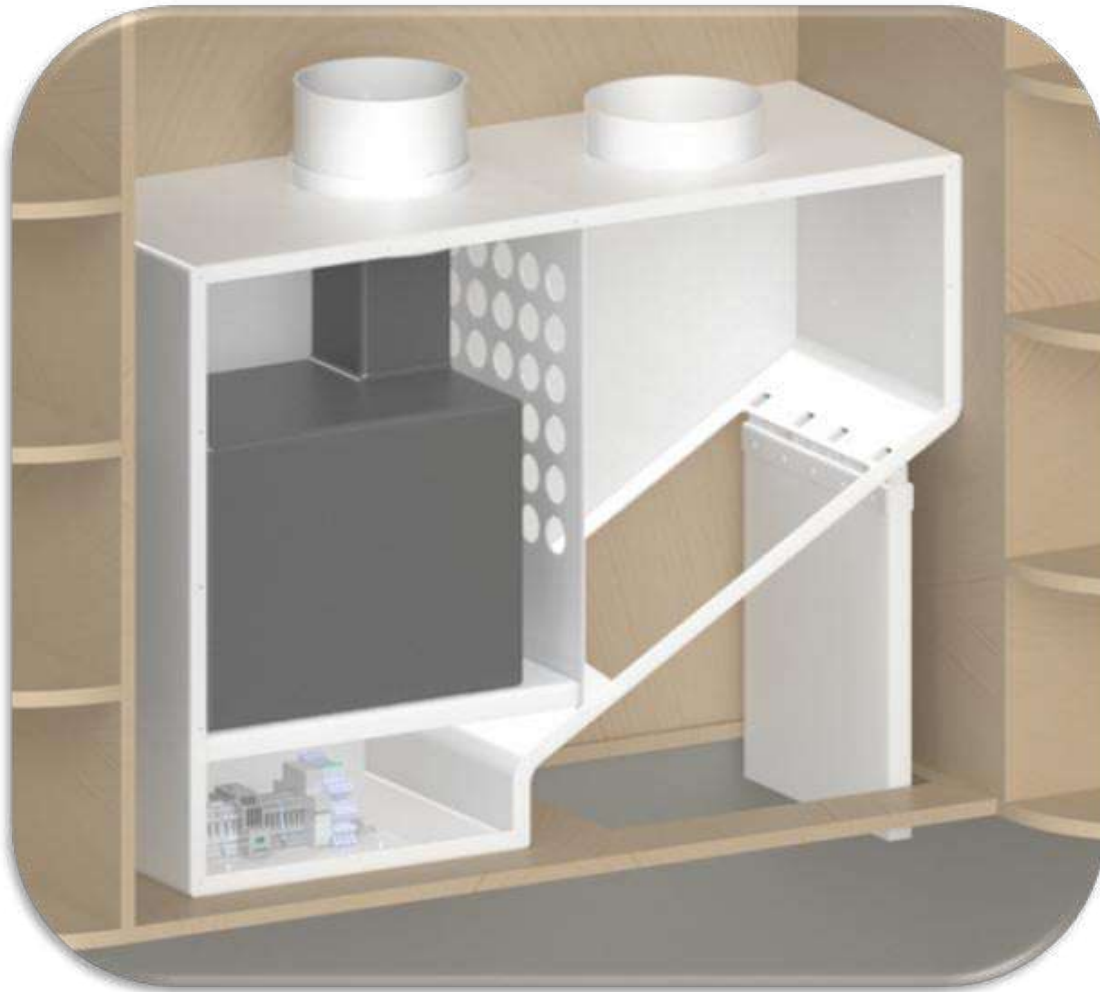
5.2 Insert Jet Pack Installation



Step 2

- If possible, provide the Installation spec to the cabinetmaker ahead of build. Please reference Section 7 for Engineering Prints.

5.3 Insert Jet Pack Installation



Step 3

- Locate the insert cabinet into the custom cabinet with the Insert Cabinet oriented to the right until it sits flush with the right side face of the custom cabinet. (Note: Insert the power cord through the small hole to the back left of the cabinet as you move the Insert Cabinet into place. Ensure the power cord is not pinched under the Insert Cabinet.)

5.4 Insert Jet Pack Installation



Step 4

- Using a level ensure that the Insert Cabinet is level and to the back and right of the cabinet. In 4 places using provided hardware, set the 4 set screws that fix the right face of the insert cabinet to the Custom cabinet.

5.5 Insert Jet Pack Installation



Step 5

- Set 3 set screws through the back wall of the insert cabinet into the custom cabinet.

5.6 Insert Jet Pack Installation



Step 6

- Cut out a section of 6" SDR 35 pipe so that it sits flush with the top of the cabinet and bond into place. This should not sit up out of the top of the cut hole but flush or slightly below the cabinet surface. Use a window sealer to seal between the pipe penetration and the custom cabinet.

5.7 Insert Jet Pack Installation



Step 7

- Mount the diffuser assembly using the provided hardware.

5.8 Insert Jet Pack Installation



Step 8

- Connect the trunk line to the Vac Chamber flange. Bond in place ensuring a tight supply seal.

5.9 Insert Jet Pack Installation



Step 9

- Mount the Cosmetic Discharge Trim to the bottom of the Custom Cabinet centered around the cut out discharge opening.

5.10 Insert Jet Pack Installation



Step 10

- Using the provided hardware in 4 places, screw the discharge trim into place. (There is no need to seal this connection.)

5.11 Insert Jet Pack Installation



Step 11

- Attach main front panel. Prior to attaching the panel, make sure the seal material is in good shape and has not been pulled off or torn during the installation process. Attach panel using the provided hardware.

5.12 Insert Jet Pack Installation



Step 12

- Test the discharge port door. Make sure that the door moves freely without drag as it cycles open and close.

5.13 Insert Jet Pack Installation



Step 13

- Close cabinet doors to make sure they have adequate clearance to open and close freely. There is no need for a seal here as the cabinet is a sealed system.

6 Warranty

Lifetime Limited Warranty

Laundry Jet is protected by a limited lifetime warranty. This warranty is valid from the date of purchase, for as long as you are the original owner, and the system remains at its original place of installation and as long as the warranty form has been completed at our website. <http://www.laundry-jet.com/warranty>.

- Limited lifetime warranty on metal body.
- 1 year standard warranty on the Laundry Jet Vac Pac Power Unit
- Vacuum Laundry pipe 1 year warranty.
- Vacuum Ports 3 year warranty
- Switches and LEDS 3 year warranty

THIS IS THE SOLE AND EXCLUSIVE WARRANTY OF LIFE FLOW, LLC – LAUNDRY JET. IMPLIED WARRANTIES, INCLUDING IMPLIED WARRANTIES OF MERCHANTABILITY OR FITNESS FOR A PARTICULAR PURPOSE ARE LIMITED IN DURATION OF LIMITED WARRANTY PERIOD.

Should any defect in material or workmanship appear within the time of the above warranty, the selling Laundry-Jet Dealer should be contacted. The Dealer shall repair or replace (at Laundry Jet's sole option), or credit, such part or parts in accordance with the applicable warranty period stated above. Life Flow LLC – Laundry Jet shall not be responsible for such service unless provided by an authorized Laundry Jet Dealer utilizing authentic Laundry Jet replacement parts.

This warranty does not apply to loss or damage resulting from (at Laundry Jet's sole option) normal wear and tear, commercial use, vacuum of drywall dust, neglect, abuse acts of God, accidents, improper installation, improper modification or alteration, improper use and operation or failure to provide proper maintenance.

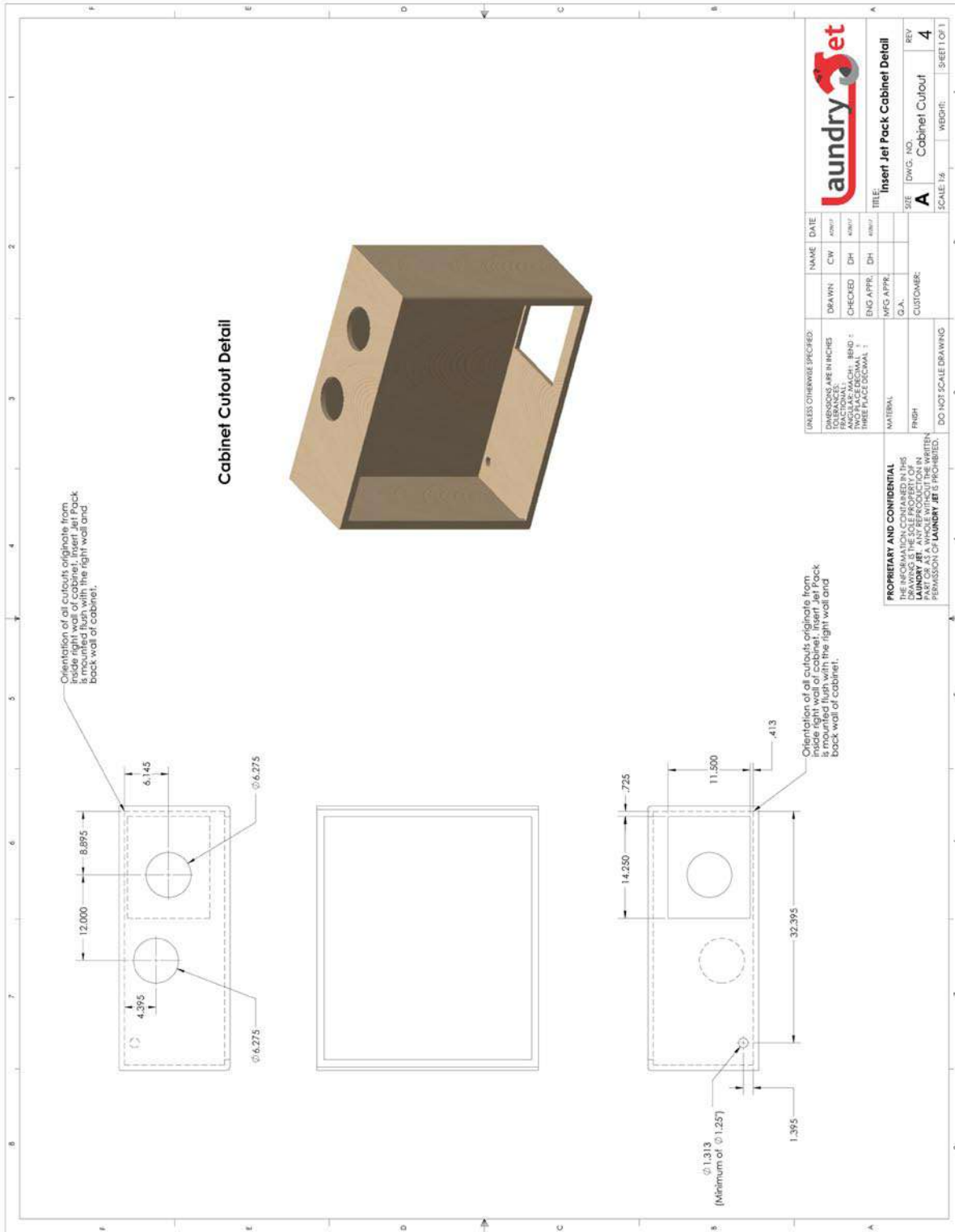
Some States or Provinces do not allow exclusion of warranties or limitations of damages, so the above limitations and exclusions may not apply to you. This warranty gives you specific legal rights. You may have additional rights, which vary from State to State, or Province to Province. This limited warranty applies to USA and Canada installations only. For specific warranty information for your Country, consult your authorized Laundry Jet Dealer.

Other warranties apply to other parts of this equipment and optional accessories. Please contact the material accompanying the individual items.

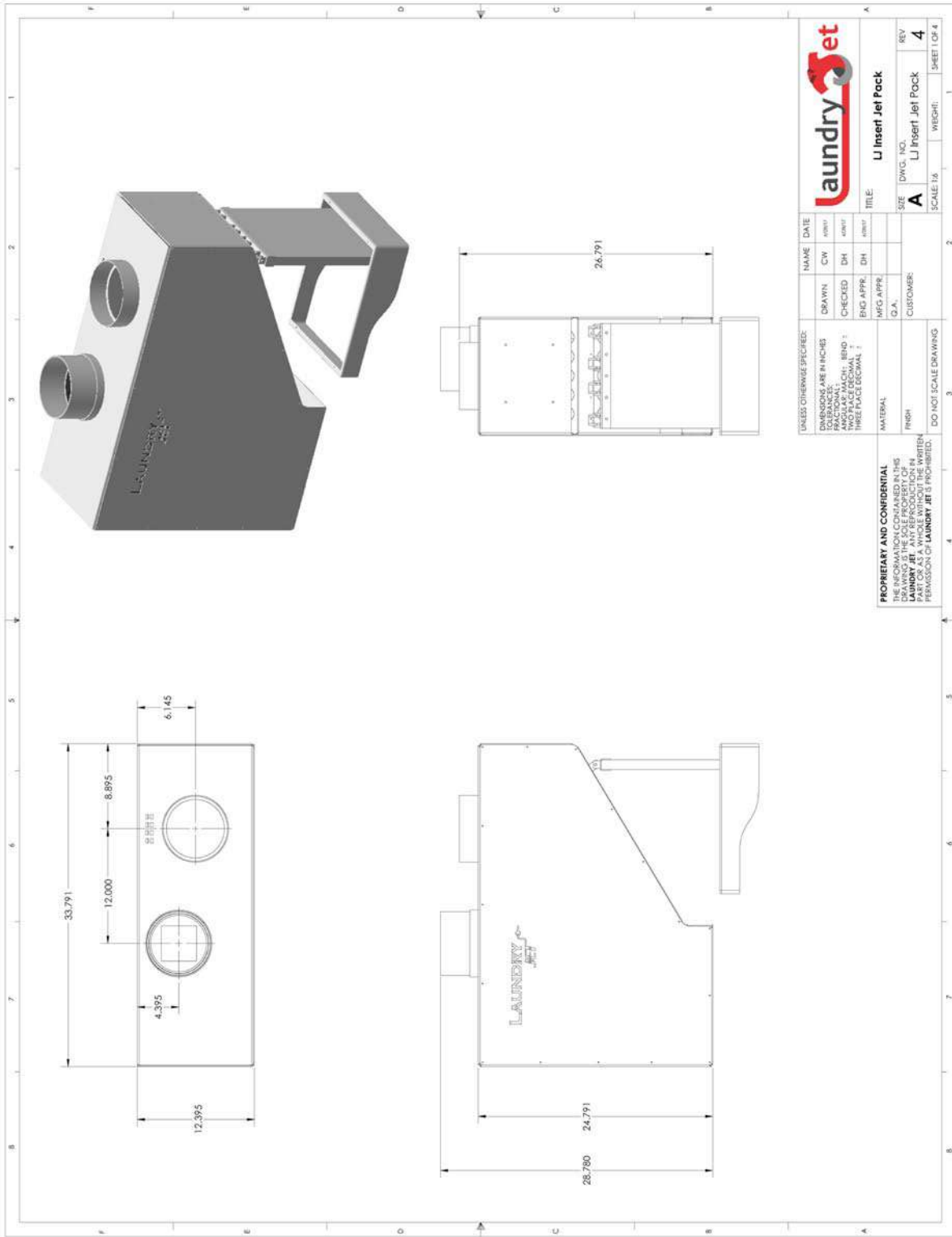
**LIFE FLOW LLC – LAUNDRY JET, SHALL NOT BE RESPONSIBLE FOR ANY
CONSEQUENTIAL, INCIDENTAL, OR SPECIAL DAMAGES ARISING FROM THE USE OF
THIS SYSTEM.**

Extended warranties are available at the time of purchase.





		Insert Jet Pack Cabinet Detail	NAME: _____ DATE: _____
DIMENSIONS ARE IN INCHES FRACTIONAL: ONE, NINE, FIVE TWO PLACE DECIMAL: 1 THREE PLACE DECIMAL: 1	DRAWN: CW 4/20/17 CHECKED: DH 4/20/17 ENG APPR: DH 4/20/17 MFG APPR: _____ G.A.: _____	SITE: _____ DWG. NO.: _____ SCALE: 1/4" = 1"	REV: 4 CABINET CUTOUT
DO NOT SCALE DRAWING	MATERIAL: _____ FINISH: _____ CUSTOMER: _____	TITLE: _____	SHEET OF 1

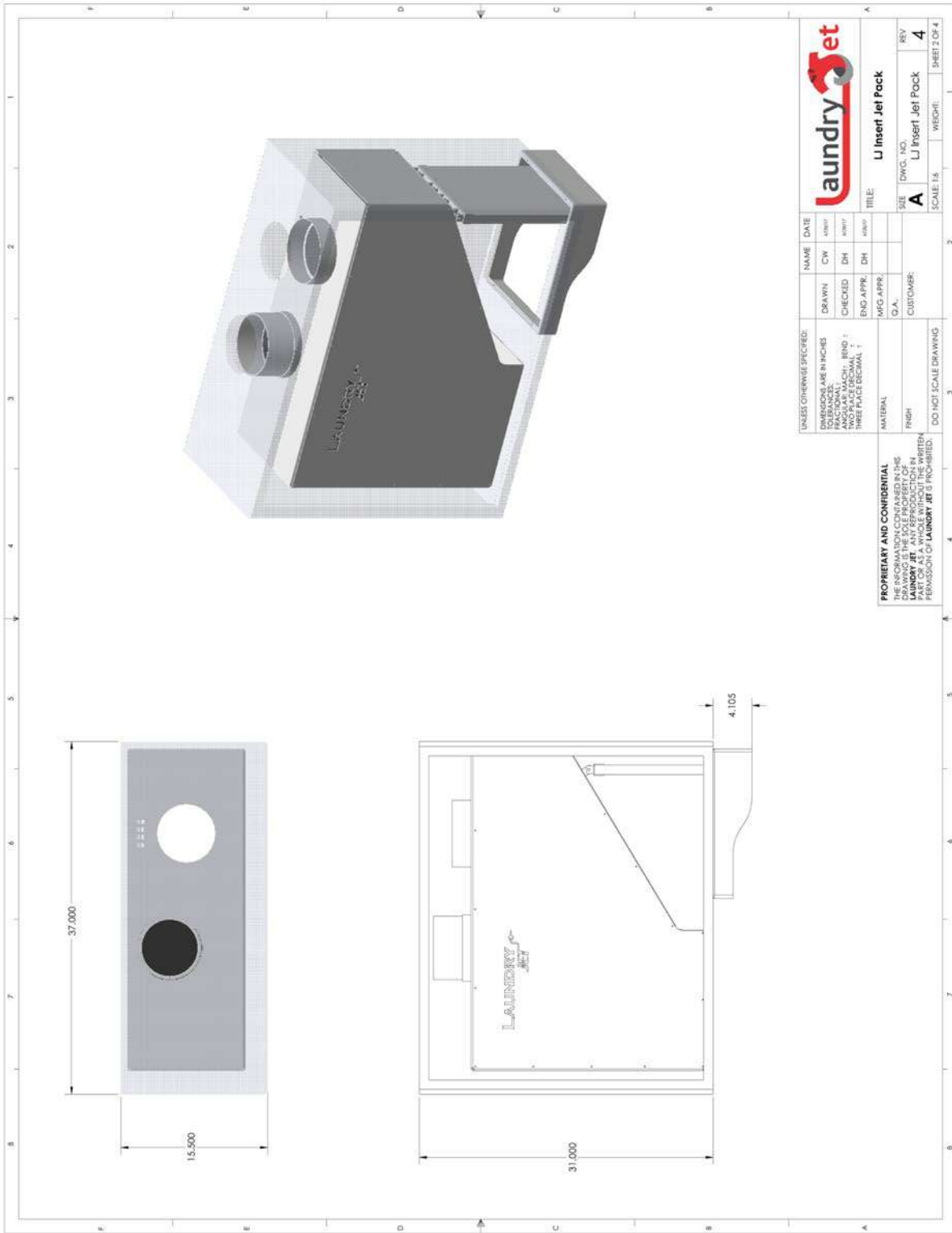


UNLESS OTHERWISE SPECIFIED:		NAME	DATE
DRAWN	CHKD	DATE	
CHECKED	DATE		
APPROVED	DATE		
ENG APPR.	DATE		
MFG APPR.			
Q.A.			
CUSTOMER:			
MATERIAL		SIZE	DWG. NO.
FINISH		A	LJ Insert Jet Pock
DO NOT SCALE DRAWING		SCALE 1:6	REV 4
		WEIGHT:	SHEET 1 OF 4



TITLE: LJ Insert Jet Pock

PROPRIETARY AND CONFIDENTIAL
 THE INFORMATION CONTAINED IN THIS DRAWING IS THE PROPERTY OF LAUNDRY JET. ANY REPRODUCTION IN ANY MANNER WITHOUT THE WRITTEN PERMISSION OF LAUNDRY JET IS PROHIBITED.



UNLESS OTHERWISE SPECIFIED: DIMENSIONS ARE IN INCHES TOLERANCES: FRACTIONS DECIMALS ANGULAR MATCHES BENDS THREE PLACE DECIMAL 1		NAME	DATE		
DRAWN	CW	DATE		SIZE	DWG. NO.
CHECKED	DH	DATE		A	LJ Insert Jet Pock
ENG. APPR.	DH	DATE		SCALE	1:1
MFG. APPR.				REV	4
G.A.				TITLE: LJ Insert Jet Pock	
CUSTOMER:				SHEET 2 OF 4	
MATERIAL:				DO NOT SCALE DRAWING	
FINISH:					

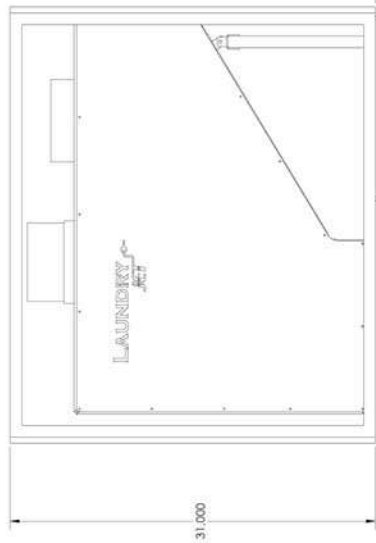
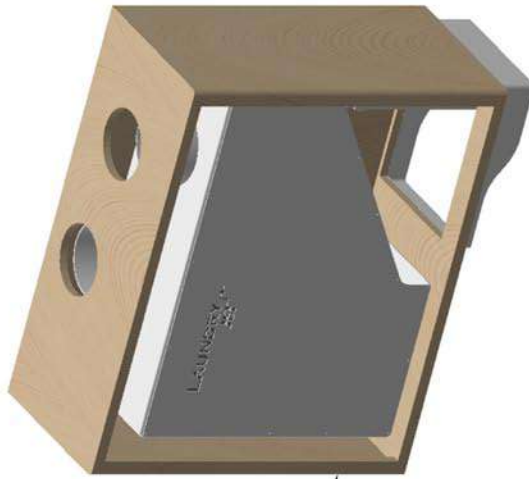
PROPRIETARY AND CONFIDENTIAL
THE INFORMATION CONTAINED IN THIS DRAWING IS THE PROPERTY OF LAUNDRY JET. ANY REPRODUCTION IN PART OR AS A WHOLE WITHOUT THE WRITTEN PERMISSION OF LAUNDRY JET IS PROHIBITED.

Laundry Jet Insert Cabinet Detail

Defined Spacing is minimum requirement for insertion of the Insert Jet Pack Assembly. It is recommended that additional spacing be allowed for easy installation where possible.



Cabinet can be finished using a typical single door or double door styles.



UNLESS OTHERWISE SPECIFIED:		NAME		DATE	
DRAWN	CW	DATE			
CHECKED	DH	DATE			
ENG APPR.	DH	DATE			
MFG APPR.					
DIMENSIONS ARE IN INCHES					
FRACTIONAL DIMENSIONS TO BE					
INDICATED AS DECIMALS					
THREE PLACE DECIMALS					
UNLESS OTHERWISE SPECIFIED					
MATERIAL					
FINISH					
DO NOT SCALE DRAWING					



TITLE: **LJ Insert Jet Pack**
 SIZE: **A** DWG. NO.: **LJ Insert Jet Pack**
 SCALE: **1/4"** WEICHE: **4**
 SHEET 3 OF 4

PROPRIETARY AND CONFIDENTIAL
 THE INFORMATION CONTAINED IN THIS DRAWING IS THE PROPERTY OF LAUNDRY JET. ANY REPRODUCTION OR TRANSMISSION OF THIS INFORMATION WITHOUT THE WRITTEN PERMISSION OF LAUNDRY JET IS PROHIBITED.

